



# EXHIBIT "B"

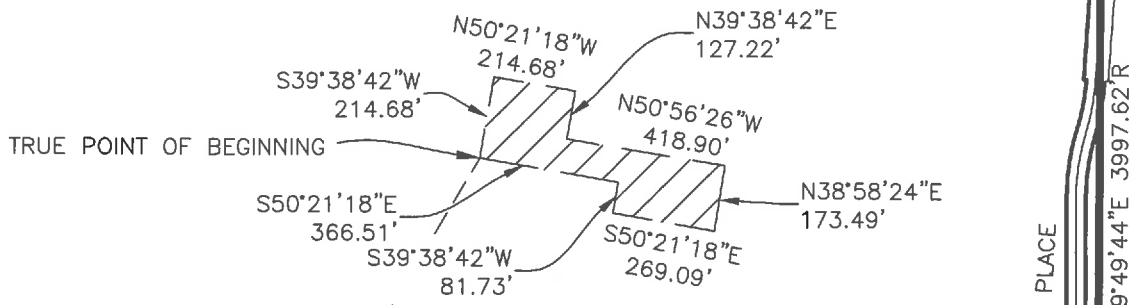
## ANNEXATION NO. \_\_\_\_\_ TO CSA 18

N60°09'06"W 3050.18'R

## TRACT 2429 REMAINDER

SCALE: 1"=500'

N30°19'37"E 4447.62'R

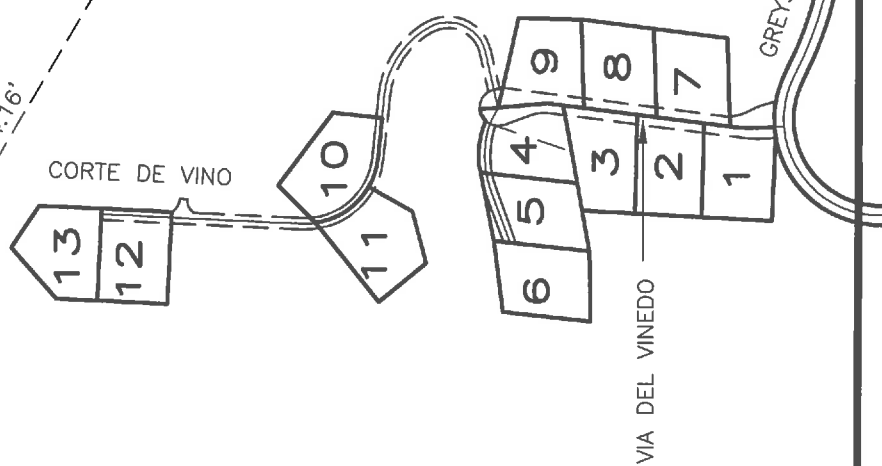


N29°49'44"E 3997.62'R

POINT OF COMMENCEMENT  
1" IRON PIPE WITH TAG  
"RE 6923" PER R

N68°26'17"W 3121.28'R

OLD CUT OFF 8X8 POST AT  
FENCE CORNER WITH TAG  
"LS 5702"



N:\2017\17-315 Jock Ranch SLO Tent Tract 2429\C3D-2019\17-315 Jock Ranch Houses Annexation Legal.dwg, 8.5X11 Ranch Houses Exhibit, Apr 15, 2022 7:17am, LRichardson



MICHAEL B. STANTON, PLS 5702  
3559 SOUTH HIGUERA ST.  
SAN LUIS OBISPO, CA 93401  
805-594-1960

April 15, 2022

JOB #17-315